

BRUNEL'S OTHER BRIDGE NEWS

AUGUST 2024



This amazing photograph shows Brunel's Lock on the right is closed by its floating caisson gate in which there are two square sluices. The present Swivel Bridge is in its original position over Brunel's Lock, and a copy is over Jessop's original north entrance lock.

In the far background the facade to the Nova Scotia with its large gate opening between the two wings is just visible.

Howard's North Entrance lock, built 1866 and 1871 has not been started so the photo predates that. The original photo also shows the Dock Master's House, built in 1858 and demolished around 1964 when the Plimsoll Bridge was built. So this narrows down the date for the photo to between 1858 and 1866. Thank you Iain Boyd, Chair of Dowry Square Residents Association for the photo, and Bob Watkins for historical interpretation.

REAL-TIME KINEMATIC SURVEY

Our long-time volunteer Charlie is now at Plymouth University, but returns to Bristol monthly to attend our volunteer workdays. In August he and volunteer Bob Watkins carried out a survey of the heritage assets on the Knuckle using sophisticated Real Time Kinematic GPS survey equipment kindly loaned by his University.

A base station on a tripod was placed over a datum pin set up for previous optical surveys, and set running early in the morning. It spent the day listening to up to 30 GPS satellites so as to accurately calculate its position in three dimensions.





A roving staff with another GPS-sensing head recorded the location in space of each bollard, building, plate and dock coping as required. The roving GPS continually corrected its location by communicating with the base unit, so that it knew where it was to an accuracy of less than a centimeter. It reported its accuracy to Charlie continuously, (generally within 8mm) and refused to work if its error exceeded 30mm. (1 1/2ins).

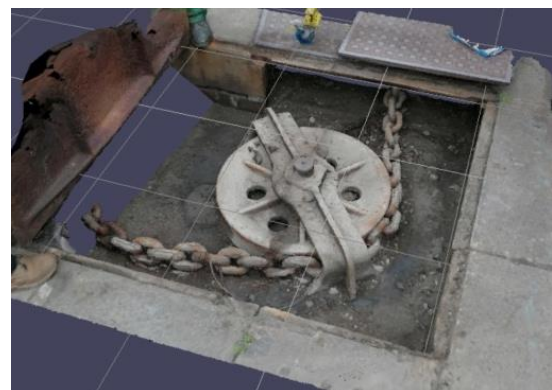
Whilst extremely sophisticated (and valuable), the equipment was 'user -friendly', so that Charlie and Bob were able to take several readings per minute, and survey the whole Knuckle in a morning. 'Eastings and Northings' (see right photo) will be processed and incorporated onto Bob's existing drawings improving accuracy and detail.

JIGGER-PIT SURVEY STARTS

We have started our survey of the historic machinery in the pits which operated the Howard Lock gates over a century ago.

Driven by 750 psi water carried from Underfall Yard by cast iron pipes, the water moved large hydraulic rams which pulled chains.

We discovered one of the original pulleys and chains still in place. Numerous still photographs were taken all around and 'stitched' together photogrammetrically to produce a 3D image.



Come and join our next discovery days on September 21st and October 26th from 9.30 am.

WESTERN HARBOUR ADVISORY GROUP

This Advisory Group was set up earlier this year. Its advertised aims are to:

- Champion, inspire & advocate for different elements of the Western Harbour vision
- Proactively bring ideas and community insight to the table
- Give a steer on the overall direction of the project
- Be a sounding board for the project as it goes forward
- Show a willingness to learn about the area and the existing community, the reasons for the project, and the considerations affecting it and emerging issues through the masterplanning process
- Share information with their wider communities

Applications went in during February, members were appointed in March by Bristol City's Regeneration Group, and the members met in April, May, June, and July.

The members are:

Lorna Allsop: Centre for Deaf and Hard of Hearing (CfD). Deaf Alzheimer's Support Group

Matt Donnelly: Young Bristol, Sea Mills Boys' & Girls Club, Broad Plain Boxing Club/England Boxing, National Association of Boys' & Girls Clubs

Sandra Fryer: Chair of Bristol Civic Society, Member of Hotwells & Cliftonwood Community Association, Chair of Governors Cotham School.

Nicola Harris: Housing Festival, Bristol Diocese

Paul Hassan: Partnership Development Manager for Ashley Community & Housing (ACH), One City Homes & Communities Board. Harbour Festival Steering Committee 2024.

Richard Holden: Underfall Yard Trust - Trustee

Helen Johnson: Spike Island (Bristol) Community Association

Councillor Patrick McAllister: Green Party, Hotwells and Harbourside [non-voting member of Cumberland Basin Stakeholder Group]

Rachel McNally: Hotwells and Cliftonwood Community Association (HCCA) - Chair, Clifton/Clifton Down / Hotwells & Harbourside Neighbourhood Forum - Co-Chair.

Celia Phipps: Labour ex-councillor for Bedminster, Chair of Action Greater Bedminster, Member of Friends of Greville Smyth Park.

Steve Shaw: Director of Riverside Garden Centre

Gerry Swarbrick: Co-Chair of Clifton, Clifton Down, Hotwells & Harbourside Neighbourhood Forum. Founder of Clifton Neighbours

Matthew Symonds: Lead volunteer for Blooming Bedminster community growing project, Secretary of South Bristol Gardening Club.

Richard Walker: Nominated representative of Harbourheads Residents Group.

Bella Warley: Skateable Spaces Development Officer at Skateboard GB.

Georgia Wigmore: Mature Architecture & Planning student at UWE.

The Brunel Swivel Bridge Group applied to join the Group but was not selected.

MASTER-PLANNING TEAM

The master-planning team has just been announced publicly, although they were appointed in March this year. They are:

- Lifschutz Davidson Sandilands - Architect and Masterplanner
- Avril Baker Consultancy - Consultation
- Arup - Engineering (Structure, Services and Civils), Environment and Ecology
- Beckett Rankine - Marine Engineering
- Eadon - Moving Bridges
- Jubb - Transport
- OP-EN - Landscape
- The Townscape Consultancy – Heritage

The heritage consultancy on the team, The Townscape Consultancy, is based in Pall Mall London. The Brunel Swivel Bridge Group has asked to be put in touch with them.

Public engagement on the master-plan is due to start in August 2024 and the master-plan be completed in summer 2025.

HERITAGE ASSETS CONSERVATION POLICY

Seven local and one national organization have officially endorsed our Heritage Assets Conservation Policy, as well as numerous individuals. A big 'thank you' to everyone who supported the Policy, a copy of which is attached for information.

It has now gone off to Bristol City Council's Regeneration Team for onward transmission to the Master-Planners. We look forward to talking to the Planners directly soon.

PS WAVERLEY



On 11th June a number of BOB volunteers and supporters enjoyed a three-hour trip on PS Waverley, the only sea-going paddle-steamer still carrying passengers. On a sunny evening we viewed Portishead, Portbury, and both Steep and Flat Holm Islands.

Organized jointly by Waverley and SS Great Britain we were delighted to find Mr B himself on board, eating Pringles and supping coffee, whilst at the same time smoking a cigar. However, he was rather taller than shown in old photographs, but when challenged, pointed out that he had grown in stature over two centuries.

TRUEand a very clever reply!

SOME BRISTOL DOCKS EVENTS in 2024

Sept 14th Bus Rally. Sept 21st Dragon Boat Race . Oct 14-18th Have a Go Loco/Crane.

A BIG THANK YOU TO OUR VOLUNTEERS FOR YOUR ONGOING SUPPORT

WE LOOK FORWARD TO SEEING YOU AT OUR WORKDAYS

PLEASE NOTE: There is a report of each workday on www.brunelsotherbridge.org.uk and on Facebook. Do check it out, share and comment.

www.brunelsotherbridge.org.uk

www.facebook.com/brunelsotherbridge

<https://bwhha.wordpress.com/>